



**Notetech Warehouse**  
eases the warehouse

Developed by:

**Notetech Software**

37/2470, P.S. Road, Azad Road, Kaloor, Cochin - 682 017 INDIA,

Tel: +(91) 484 2345902, Fax: +(91) 484 2535027

[www.notetech.com](http://www.notetech.com)

## NOTETECH WAREHOUSE; THE MANAGER OF WAREHOUSE LEADERS

It is explicit that only the solutions that can fairly meet the present and future needs promise an ever-tranquil management of any business operations. And steady tranquility in management is not a fruit for all planning strategies. So for competing the rocketing pace of technology the technological obsolesces is not a prompt remedy.

Everyone wants more control on his or her business. The more control you have, the better you perform. Warehousing operations are congenitally chaotic processes. To do the thing well, you need control on processes, equipments, personnel, space and time.

We know that you are particular to your business, so your warehouse business deserves the latest and efficient software to operate through. **Notetech warehouse-The web based customizable multi warehouse management solution is the right choice to meet the needs of your business.**

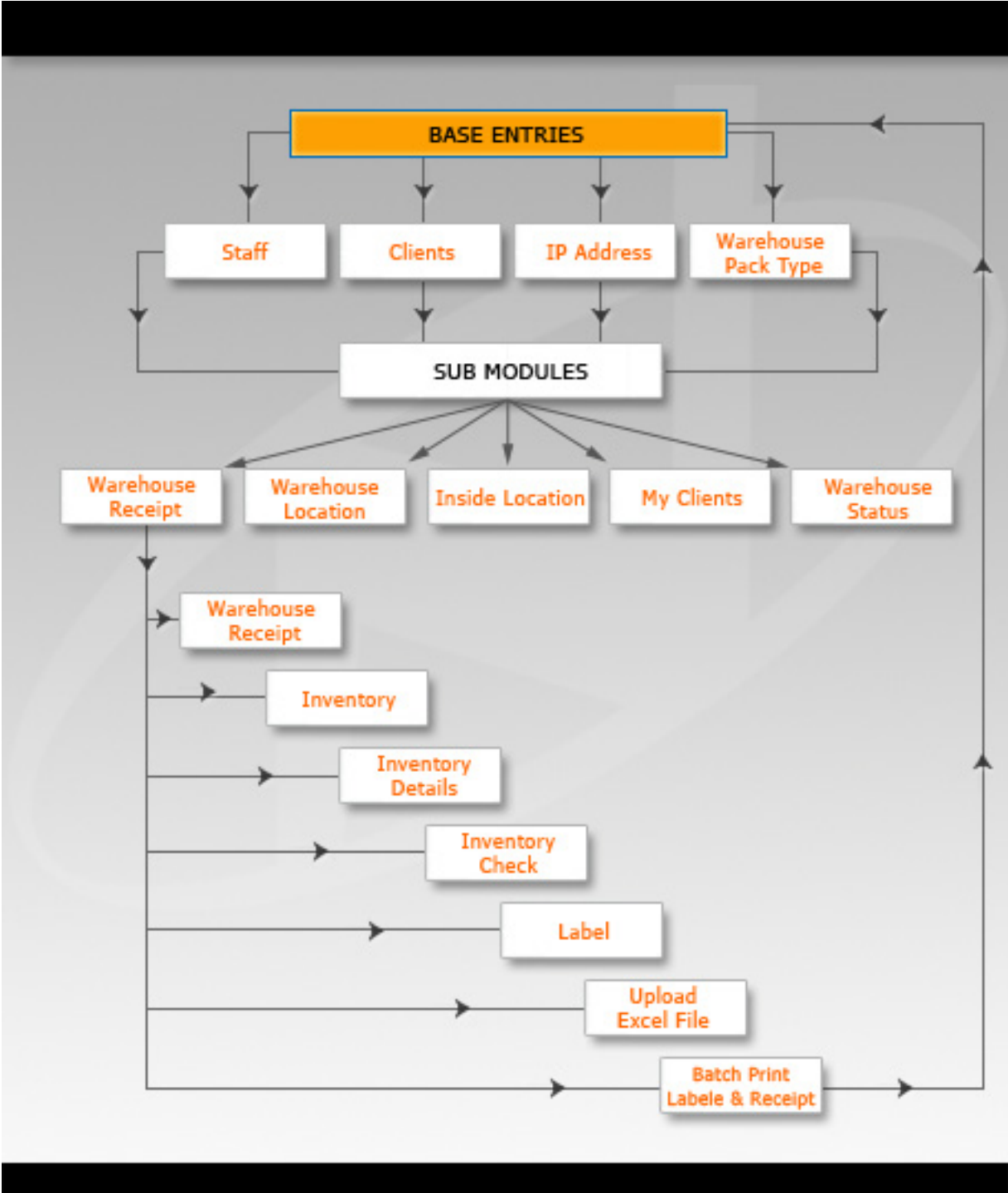
Notetech warehouse, a fully Web based application, which helps to maintain the operations of a single or multiple warehouses located in different locations anywhere in the world. At Notetech warehouse you will get everything for a tranquil warehouse management by a PC with Internet connection.

### **Notetech warehouse -the techno of process**

Notetech warehouse designed to provide an information flow that acts much like chain, in which all the components are linked and flow like a river .So you, can take -in and take -out information by not affecting the flow of process.

The chain starts from base entries. This category comprises all most all-micro information that is required to complete the warehousing cycle in a smooth manner. The data in the base entries fetch to modules and sub modules and shortening the time taken for each cycle through which reduce time and cost.

# Notetech warehouse - The process paradigm



## Automated warehouse operations

When an operational chain turns to be automated, it delivers accuracy, perfection, and timeliness to the whole process cycle .It leverages better control on your business with better profit, improved data accuracy, reducing process tasks, increased through put, reducing cycle time, eliminating redundant paper work and data entry.

When a system of operations turns to be automated it can promise you quality and accuracy. Notetech warehouse keeps its statuesque by delivering the perfection in a seamless manner.

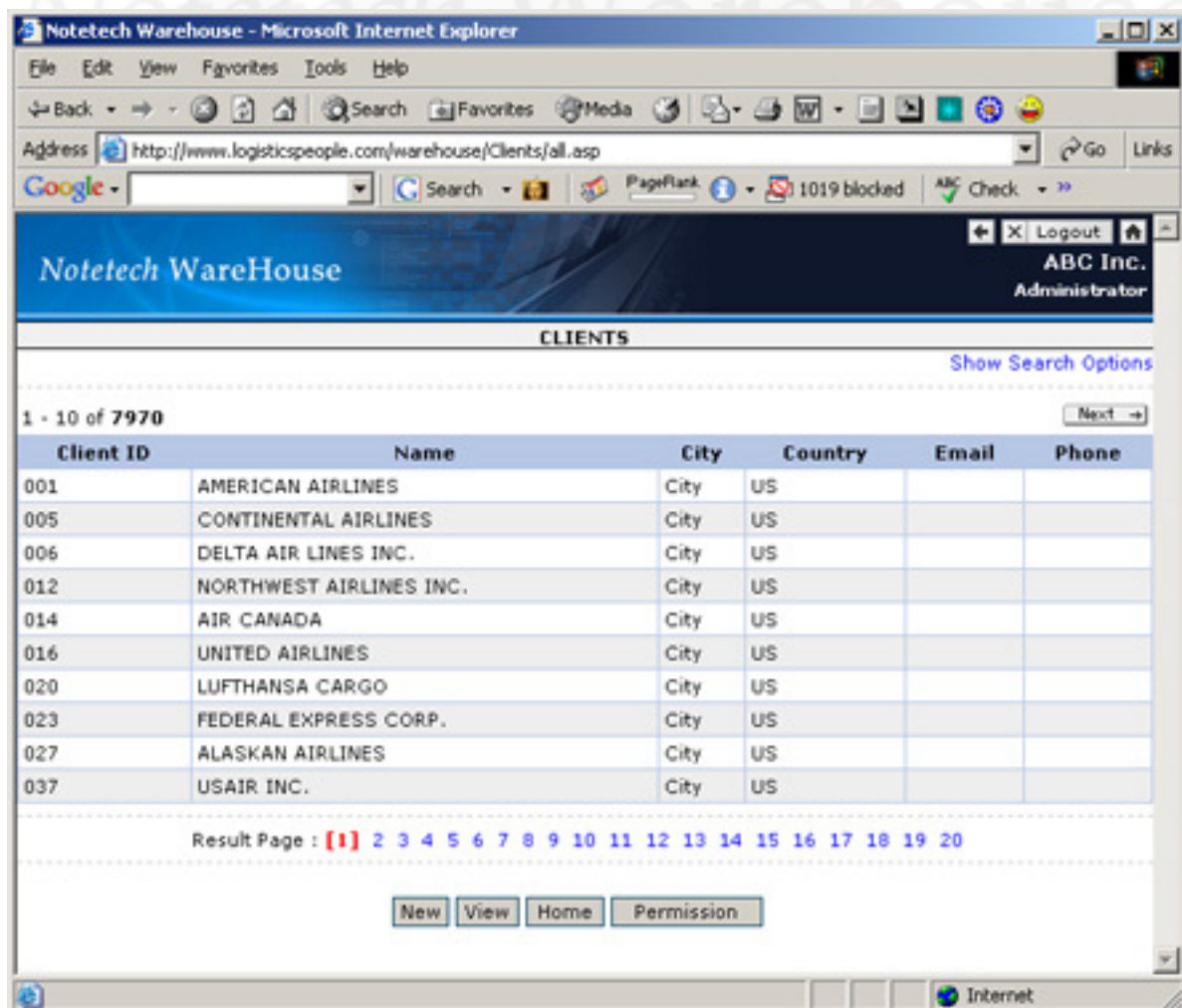
Notetech warehouse delivers impeccable automation in client documentation and security ensuring.

### Automated data management

Data management is chronic headache in every operational ambience .If the data management is effective, the effective management of all other process in the cycle will go after to it. In the case of warehousing the case is not different at all.

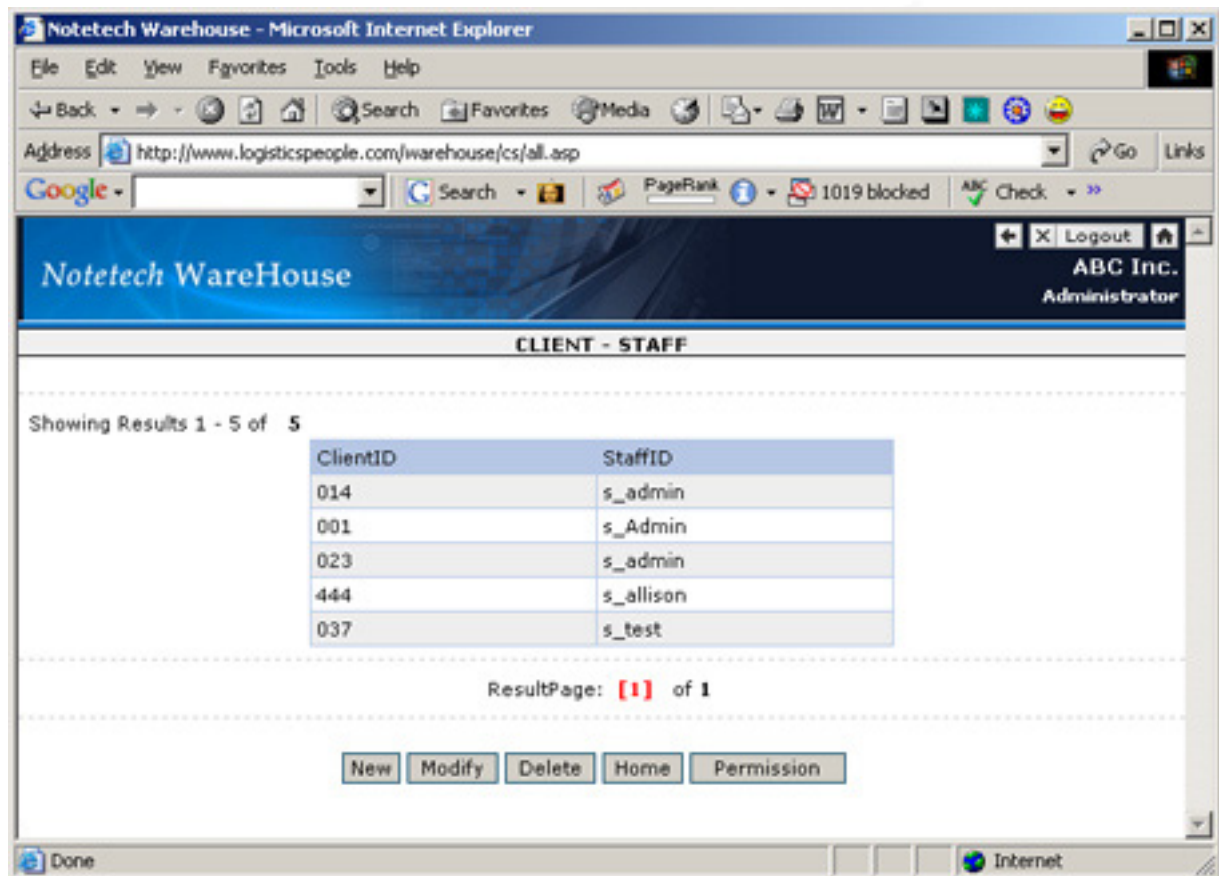
### Client Records

Notetech warehouse offers you the facility for create client records separately and can keep in database with distinctive space. The data and record that you created here will be fetched to other modules where the client information required.



## My client Records

Each staff can create and keep their own community of clients. That is there is facility for separately keep the list of client that each staff handles.

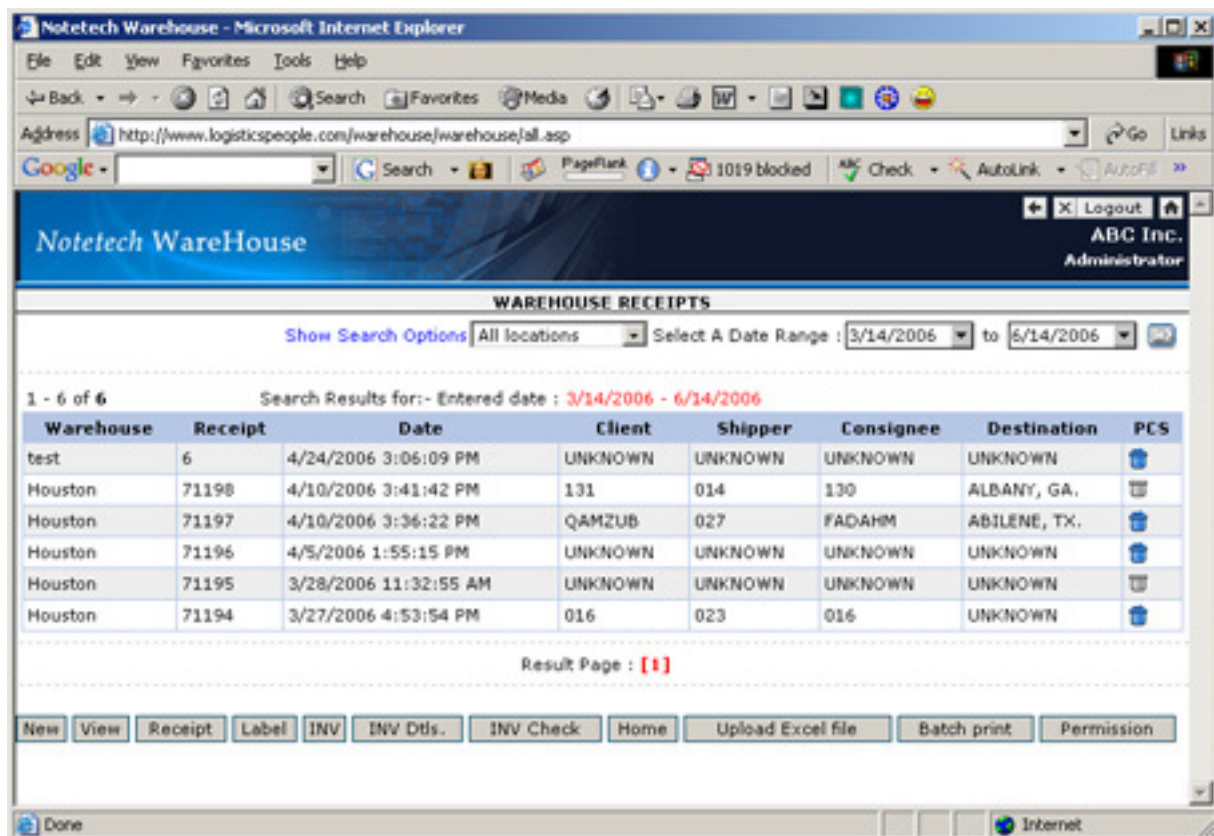


## Warehouse Receipt Record

Notetech warehouse delivers the functionality for creating the warehouse receipt of the commodity of each client's accordance with the concerned staff.

And Notetech warehouse facilitated with the creation and printing of labels and receipts in one by one mode or mass print mode.

- Automated labels
- Automated receipts
- Direct Uploading of excel files
- Batch printing of labels and receipts



## Automated Security management

- Application security

Ensuring application security by facilitates multi layer security to application. The application security comprises by

- Server security

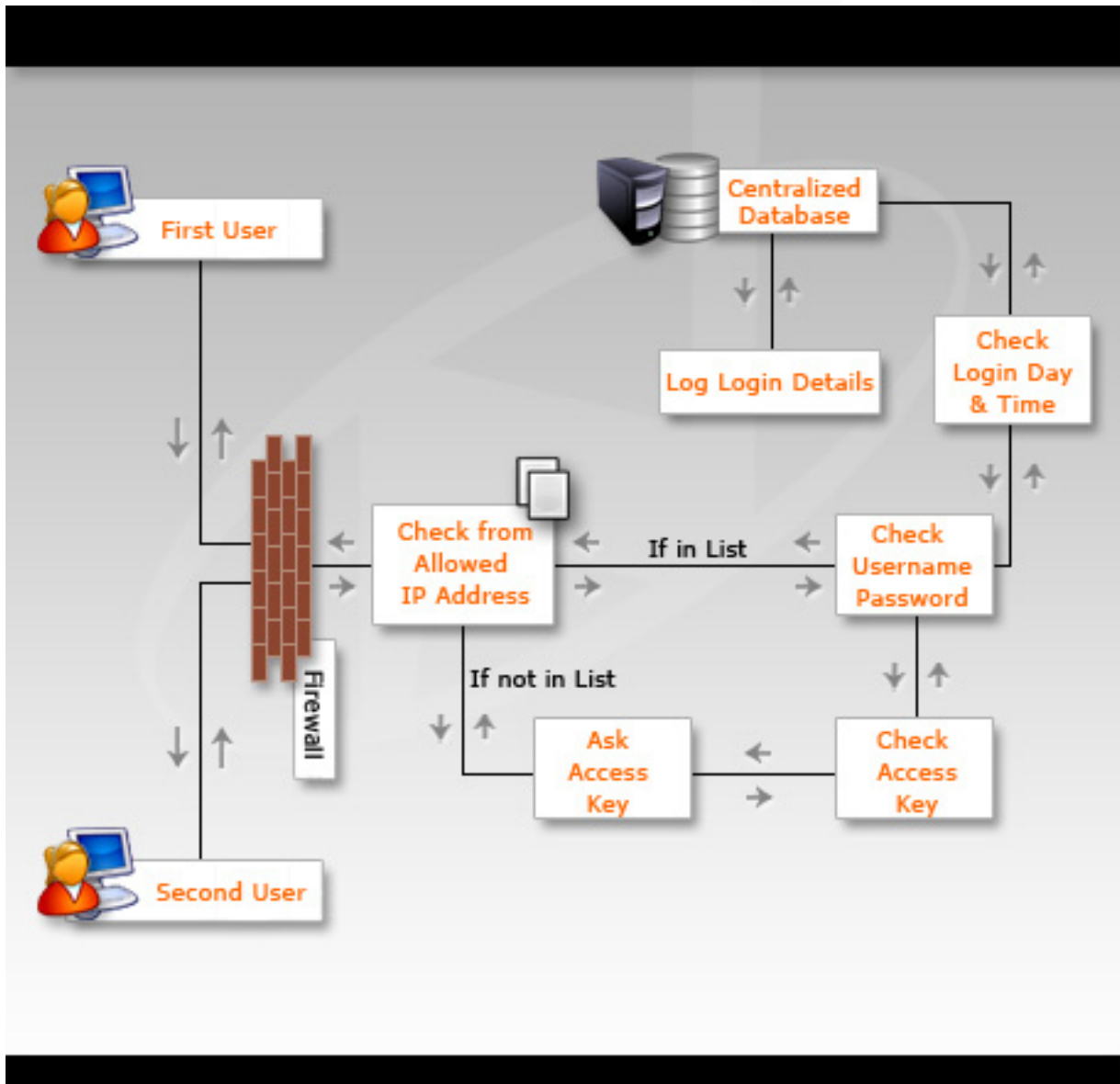
Link web server should be configured to allowed IPs. So the particular IP only be permitted to access that database server and answering to the addresses from within the internal network.

That is, the application is accessible through the access points, which IP is listed in the permitted IP list in database.

- User authentication security

Authentication security governs the barrier for clearing the right to access of the user. Users have to be valid to identification before access is granted. The administrator adjustable security levels make the authentication customizable

Each user have to enter the valid user name and password for accessing the application. In case of remote access have to enter the access key in the concerned filed.



### Shipment security

Commodity is the key of warehousing .So Notetech warehouse gives extra care to protect your security with third eye.

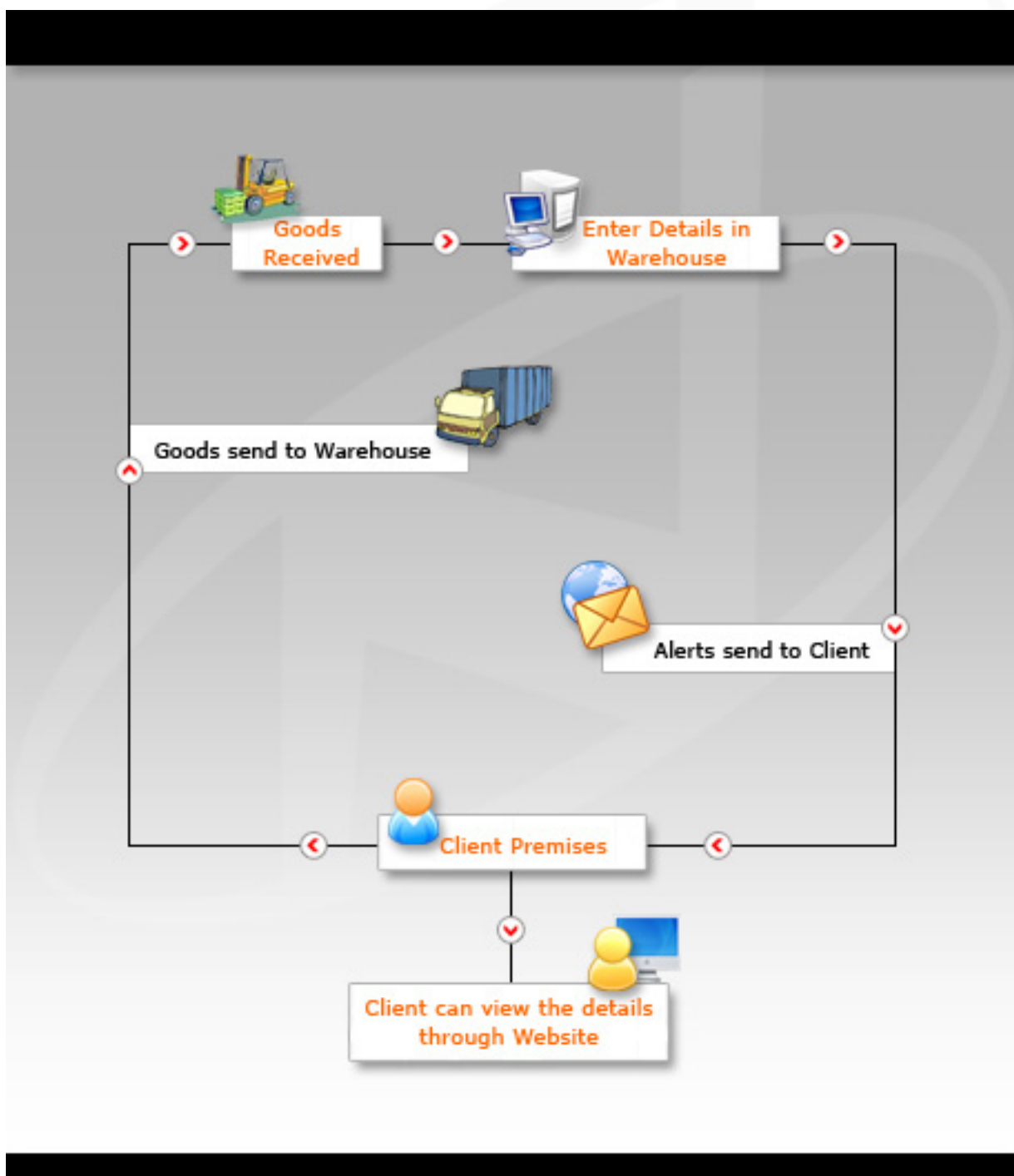
- **Shipment Tracking**

You and your clients can track the status and place of their shipment at any time through the customer interface for interaction. And automated status updating feature timely indicate the changing status of shipment.

- **Instant status Alerts**

Notetech warehouse help you to manage your business at ease. By default each staff get alerts when the client's commodity that listed in the particular staff's my client record will reach at warehouse.

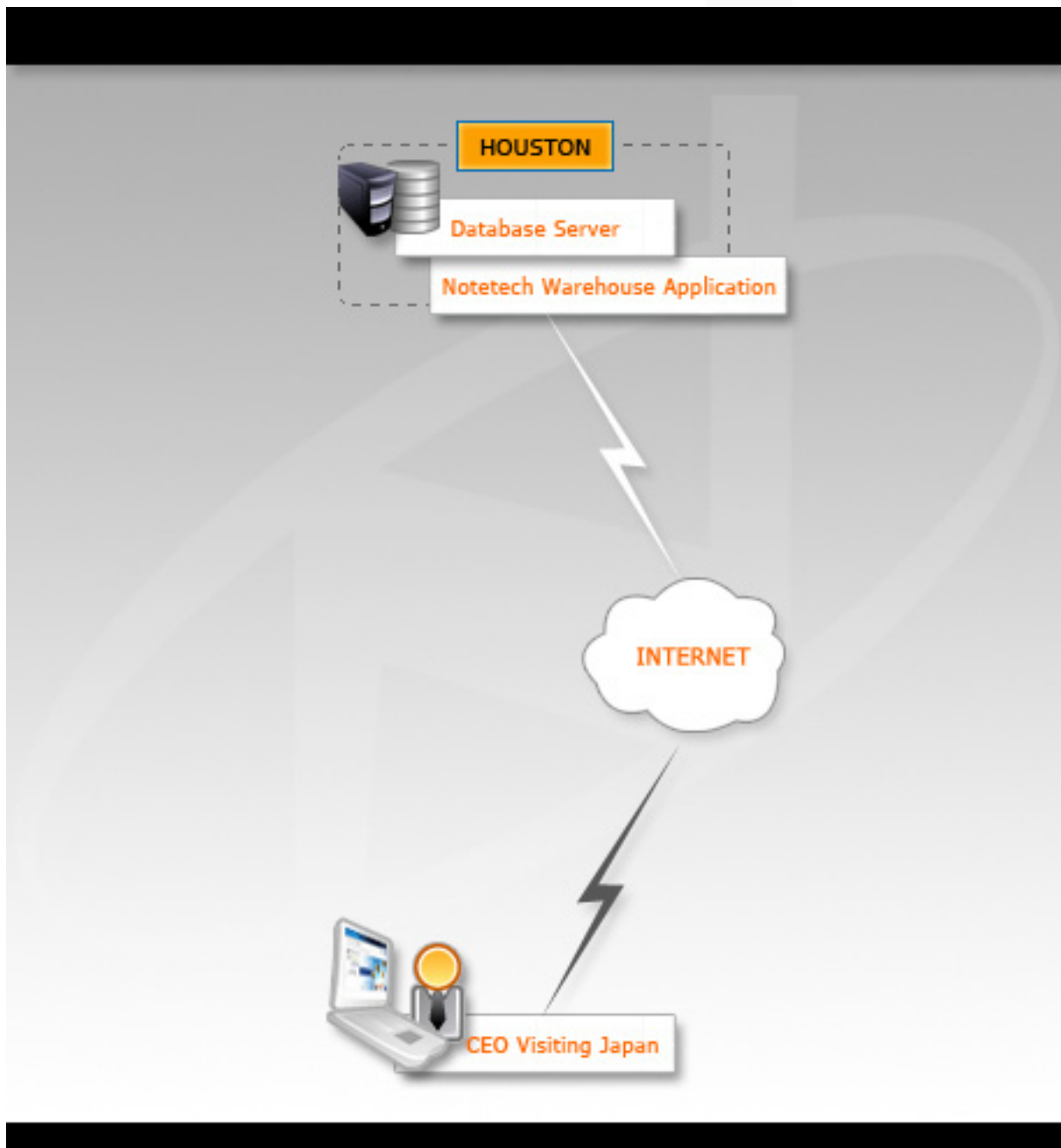
Notetech Software can provides you the customizability of developing the facility for instant mobile alerting to your clients and managing authorities.



- **Special alerts**

CEO like management authorities will constantly get alerted with alarms On specific cases.

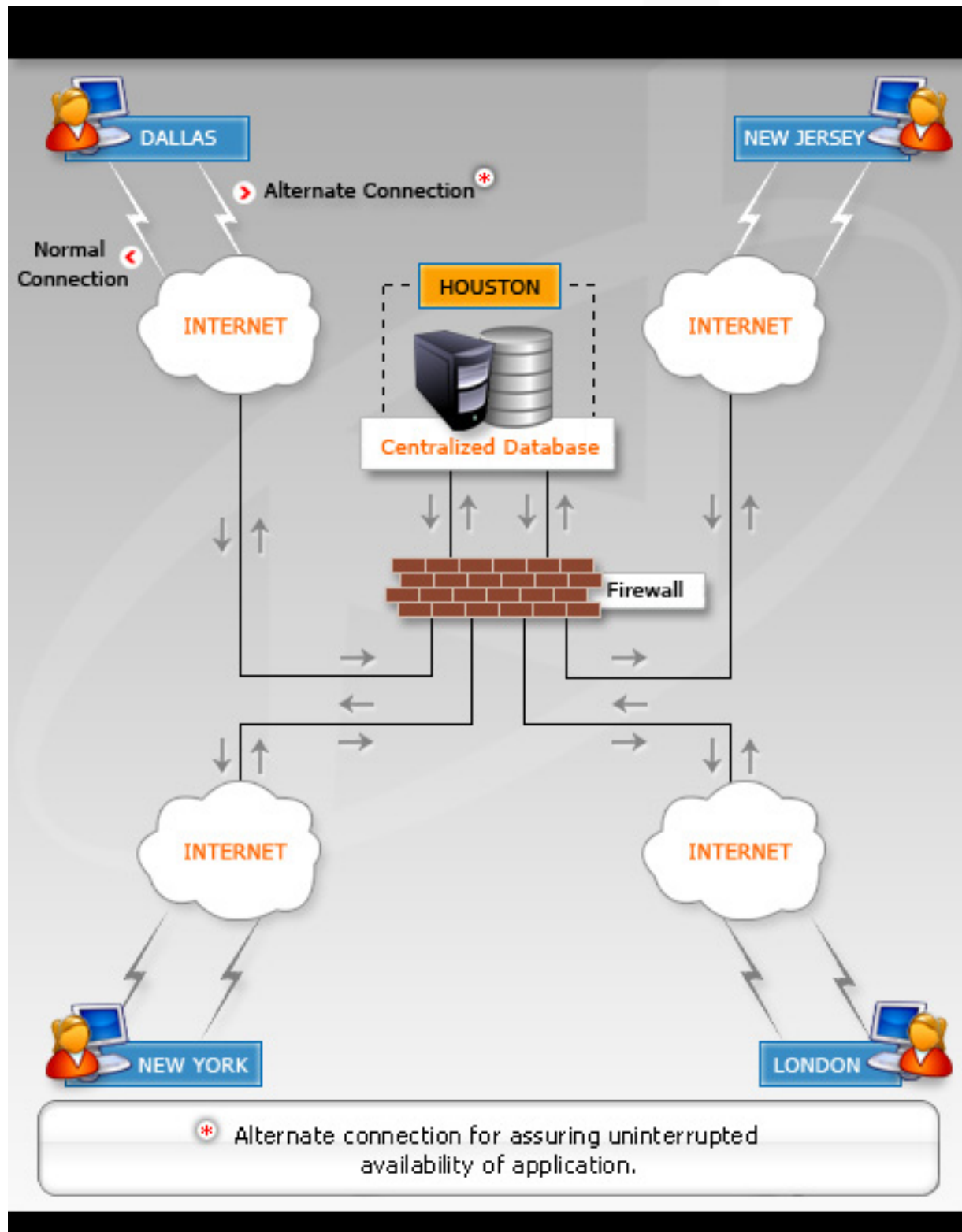
The CEO or other managing authorities can access data remotely by accessing Internet on your laptop. The picture demonstrates the accessing of live data from database in Houston to the laptop in Japan.



## Product features

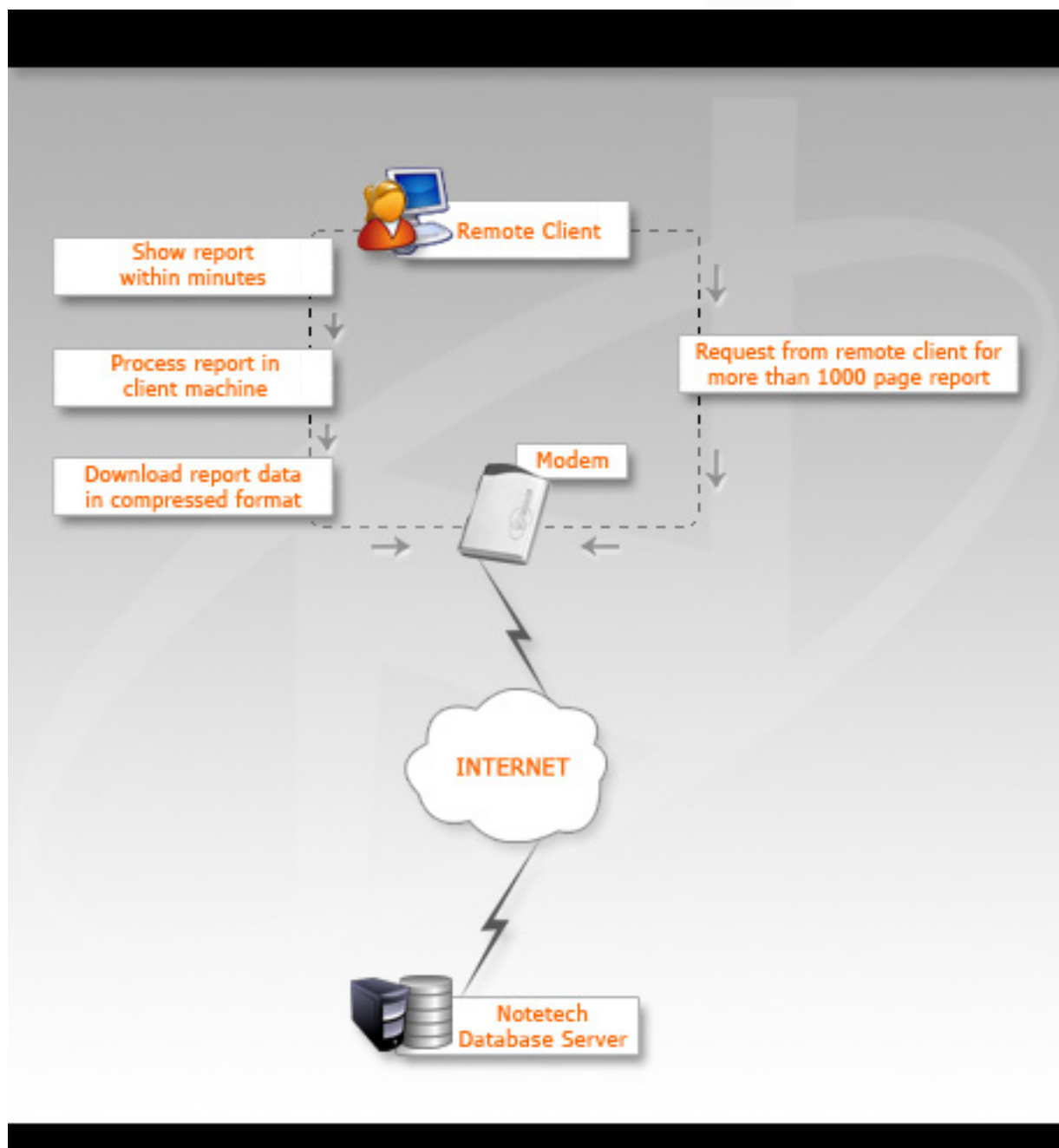
### Web based

Notetech warehouse require to be maintained only in the main office. So a single IT person is required to maintain the whole application even if you have 100's of warehouses. No need of an experienced IT Person, because any person who can start the server and take the backups is more than enough. This can be assigned to any of your staff that likes to work with computers.



- **Bulk report access**

With Notetech warehouse clients can remotely view and download thousands of pages report within few minutes through Internet. The server by default compress millions of records to 1/20th of actual size and easily downloads reports to client machine with in a few minutes. The client's computer can remotely access server through Internet from anywhere on the globe. It helps the executive level officials for remote analysis of whole records though they are away from office; while warehouse staff benefits it by taking heavy live stock report at one click.

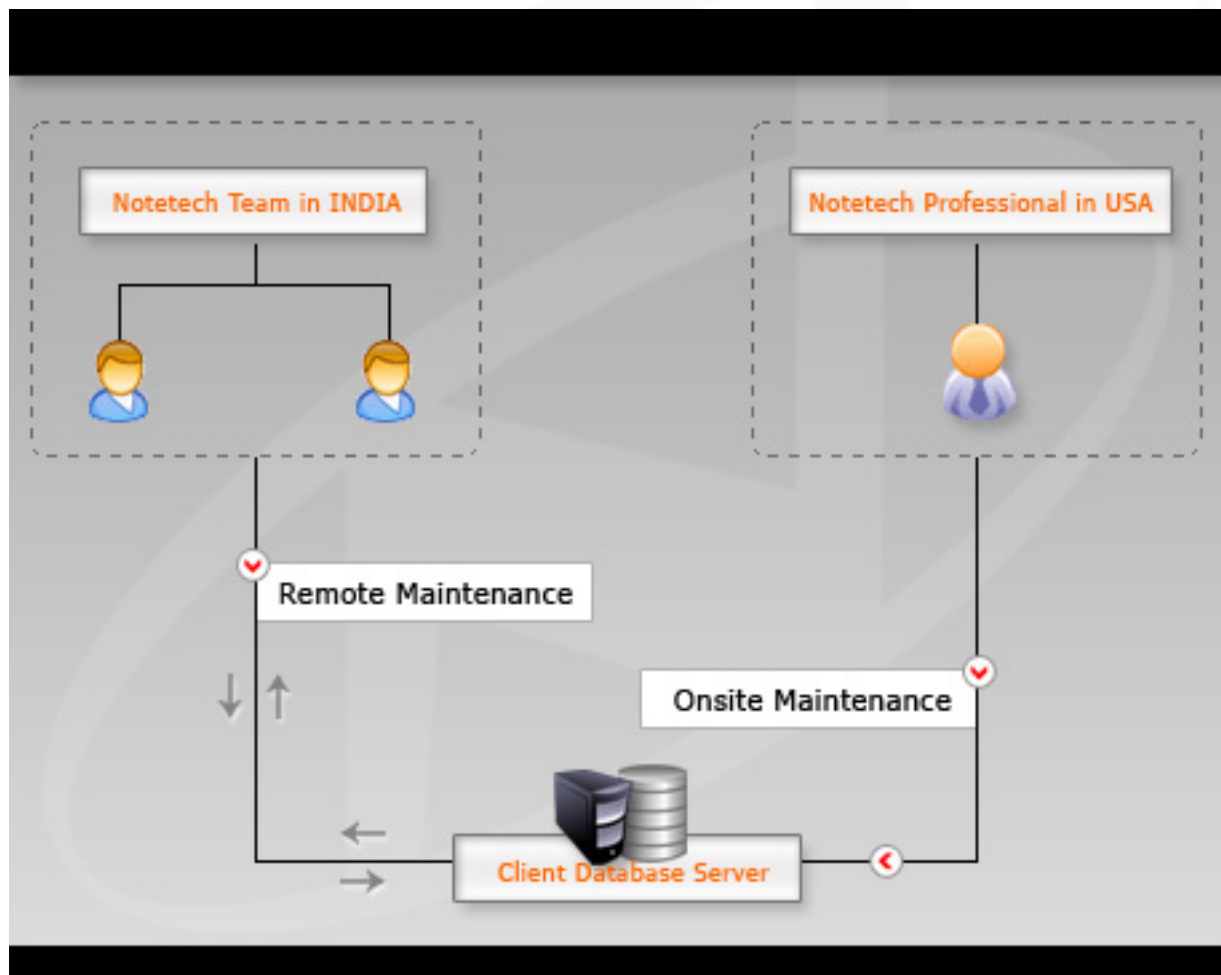


- **100% customizability**

Notetech developers with exceptional technical skill and the flexible design of the application, eases tailoring of anything for your warehouse like online tracking of materials, online estimation of expenses, online billing, online quoting, online forms and anything that boost your business within your time and budget.

- **Anywhere anytime support**

If you require any customization to the application, Notetech team will do it either through a PC mirror or through a terminal server within a minimal offshore development rate. If you require any onsite maintenance, Notetech professionals will be at the point to meet the needs with reasonable rate.



### The new version - Notetech warehouse

The new version of this web based application is developed using the most modern technology available today. The server side scripting is done using ASP.NET, the latest Microsoft programming framework that allows for the rapid development of powerful

web applications. We are using XML as the media of data transfer between clients and server XML provides a standard method to access information, making it easier for applications and devices of all kinds to use, store, transmit, and display data. We are Using Ajax (Asynchronous JavaScript and XML) technology for creating client side web pages. Ajax effectively does away with the traditional "Click-and-Wait" Web-application architecture of yesterday, making it possible to provide the responsiveness and interactivity users expect from desktop applications.

The Advantages to end-user

- Multiple language support
- Memory leak and crash protection
- Faster web applications
- Powerful database-driven functionality
- Familiar user interface
- Improved application responsiveness

### Technical Architecture

User friendly graphically enhanced and completely integrated - We employ powerful client server technology to build and maintain a system that is notably user friendly. It is a Windows based product line that offers the same level of performance as Unix or AS/400 systems. This system provides a recommended configuration for 'n' number of users.

### Database Server

- **Software**  
Windows 2003  
SQL Server 2005
- **Hardware**  
P-IV/Xeon 2.2 GHz or Better  
2 GB DDR 2 RAM  
SCSI HDD (RAID)

## Application Server

- **Software**  
Windows 2000 Server or Higher  
IIS 6.0
- **Hardware**  
P-IV/Xeon 2.2 GHz or Better  
2 GB DDR 2 RAM

## Recommended Node Configuration

Windows X  
IE 6.0  
128 MB SD RAM

## CONCLUSION

You can reach at a new phase of success in your business simply by realizing the relevance of the outstanding warehouse management software. Our experts are capable to execute any of your idea for giving cutting edge facilities to your business.

If you are interested in the software or have queries contact **Thomas Jordy**, Notetech software.

Email: [thomasjordy@notetech.com](mailto:thomasjordy@notetech.com)

Phone: +(91) 484 2345902

Mobile: +(91) 98950 46902